

SB04

Flow Limiters Flange Mounted

- **Flow quantity control without additional power requirements**
- **Energy saving by limiting the flow of liquids to the necessary flow rate**
- **For DIN/ASME flange PN16/300 lbs DN40...DN100**
- **Simple mounting between 2 flanges**
- **All metal design without plastic internals**
- **Material: stainless steel**
- **P_{max}: 10 bar, T_{max}: 200 °C**



Description:

The Flow limiters SB04 are developed to limit the flow of a liquid media to a certain amount. They assure that the flow amount will not exceed even by fluctuating inlet or outlet pressures.

In contrast to the most customary devices of this type the flow limiters SB04 have a spring element made of stainless steel instead of a usual plastic membrane.

Due to the differential pressure across the limiter this variable orifice changes its aperture continuously. Through increasing the orifice size with falling pressure or decreasing it with rising pressure the flow rate will always remain constant.

Typical application:

For water and watery media. Usable in water distribution systems in the industry, in car wash installations, for sanitary applications and in water treatment systems.

Method of operation and composition:

see data sheet SB02

Flow volumes:

The individual elements can be used for all flow rates from 1...30 l/min water in steps of 1 l/min each.

By adding several flow elements on to a common disc nearly all flow rates may be realized.

Technical Data:

min. control pressure: 2 bar

max. working pressure: 10 bar

max. media-temperature: 200 °C

accuracy for 1...30 l/min:

bis 2 l/min: ± 15 % of flow value

ab 3 l/min: ± 10 % of flow value

Materials:

| | | |
|---------------------------------|------------------|--------|
| Stainless steel version: | device body: | 1.4305 |
| | regulating star: | 1.4310 |
| | cone: | 1.4301 |
| | rivet: | 1.4301 |
| | retaining ring: | 1.4122 |

Order Code:

Order number SB04. 2. 40DA 100. 0

Flow limiters

Disc material

2 = disc stainless steel, inserts stainless steel

Disc / nominal sizes:

40DA = DN 40 DIN/ASME

50D = DN 50 DIN

50A = DN 50 ASME

65DA = DN 65 DIN/ASME

80D = DN 80 DIN

80A = DN 80 ASME

100D = DN 100 DIN

100A = DN 100 ASME

Flow rate:

xxx = in l/min water

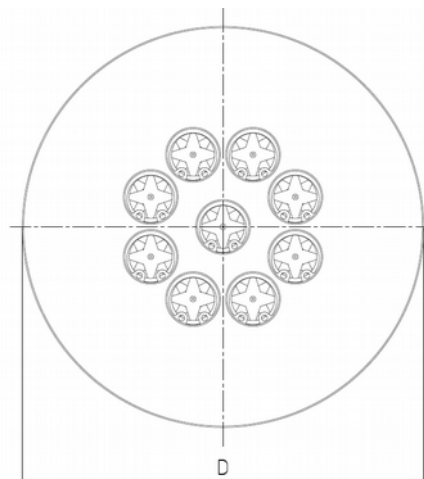
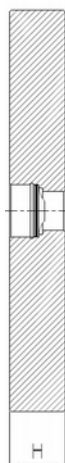
Options:

0 = without

1 = please specify in plain text

Versions and dimensions:

The flow limiters are available as discs for installation between two flanges.



| Nominal size | Norm | Number of regulating stars | Pressure range of the intermediate flange | Min. flow [l/min] | Max. flow [l/min] | H [mm] | D [mm] |
|--------------|------------|----------------------------|---|-------------------|-------------------|--------|--------|
| DN 40 | DIN / ASME | 2 | PN 16 / 300 lbs | 2 | 60 | 19,1 | 95 |
| DN 50 | DIN | 4 | PN 16 | 4 | 120 | 18 | 110 |
| DN 50 | ASME | 4 | 300 lbs | 4 | 120 | 23,9 | 113 |
| DN 65 | DIN / ASME | 7 | PN 16 / 300 lbs | 7 | 210 | 23,9 | 130 |
| DN 80 | DIN | 9 | PN 16 | 9 | 270 | 20,0 | 145 |
| DN 80 | ASME | 9 | 300 lbs | 9 | 270 | 23,9 | 150 |
| DN 100 | DIN | 14 | PN 16 | 14 | 420 | 20,0 | 165 |
| DN 100 | ASME | 14 | 300 lbs | 14 | 420 | 23,9 | 182 |