

PDR02

Differential pressure gauge with double Bourdon tubes for measuring relative and differential pressures

- Made completely of stainless steel, fully welded design
- Available measuring ranges: from -1...0 bar to 0...1600 bar
- Housing diameter: 100 or 160 mm
- Designs for all types of installations available



Description:

Model PDR02 pressure gauges have two separate, independent Bourdon tube measuring systems, each with its own indicator needle. The two needles indicate their respectively measured pressure on the same gauge scale. These devices can be used to monitor two separate measurement points or to determine differential pressure, such as the pressure between the inlet and outlet of a filter. The differential pressure is indicated by difference between the readings shown by the two needles. As an option, the differential pressure can also be directly read by means of an additional rotary scale. These devices are made completely of stainless steel and available in housing diameters of 100 mm or 160 mm. Housing designs are available for essentially all possible types of installations.

Typical Applications:

Model PDR02 differential pressure gauges are primarily used in the following areas of application:

- Filter monitoring
- Chemical and petrochemical industries
- Ship building
- General industrial applications

Models:

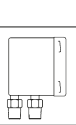
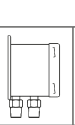
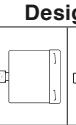
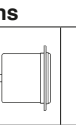
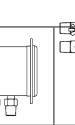

Nominal size: Housing diameter of 100 or 160 mm
Materials: Housing made of stainless steel 1.4301, Bourdon tubes and process connection made of stainless steel 1.4571

Process connection:
 2 x G 1/2 connections, male thread
 or 2 x 1/2" NPT connections, male thread

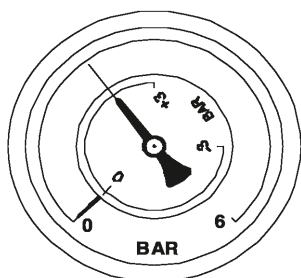
Designs:

- Version K:** for mounting on piping, connection on bottom
- Version L:** for surface mounting with rim flange on back side, connection on bottom
- Version M:** for mounting on piping, connection on back
- Version N:** for panel mounting, with three-hole bezel, connection on back
- Version O:** for panel mounting, with three-hole bezel, connection on bottom
- Version M:** for panel mounting, with bezel and retainer, connection on back

Measuring ranges:

Measuring range in bar	Designs					
						
	Ordering codes					
-1 ... 0	K16	L16	M16	N16	O16	H16
-1 ... 0.6	K42	L42	M42	N42	O42	H42
-1 ... 1.5	K43	L43	M43	N43	O43	H43
-1 ... 3	K44	L44	M44	N44	O44	H44
-1 ... 5	K45	L45	M45	N45	O45	H45
-1 ... 9	K46	L46	M46	N46	O46	H46
-1 ... 15	K49	L49	M49	N49	O49	H49
-1 ... 24	K52	L52	M52	N52	O52	H52
0 ... 0.6	K67	L67	M67	N67	O67	H67
0 ... 1	K69	L69	M69	N69	O69	H69
0 ... 1.6	K70	L70	M70	N70	O70	H70
0 ... 2.5	K72	L72	M72	N72	O72	H72
0 ... 4	K73	L73	M73	N73	O73	H73
0 ... 6	K74	L74	M74	N74	O74	H74
0 ... 10	K75	L75	M75	N75	O75	H75
0 ... 16	K76	L76	M76	N76	O76	H76
0 ... 25	K78	L78	M78	N78	O78	H78
0 ... 40	K79	L79	M79	N79	O79	H79
0 ... 60	K80	L80	M80	N80	O80	H80
0 ... 100	K81	L81	M81	N81	O81	H81
0 ... 160	K82	L82	M82	N82	O82	H82
0 ... 250	K84	L84	M84	N84	O84	H84
0 ... 400	K86	L86	M86	N86	O86	H86
0 ... 600	K87	L87	M87	N87	O87	H87
0 ... 1000	K88	L88	M88	N88	O88	H88
0 ... 1600	K89	L89	M89	N89	O89	H89

Rotary scale for direct reading of the differential pressure:



Model Coding:

Order Number: PDR02 10. E. 15G. 0. K75. 0. 0

Pressure gauge with double Bourdon-tube measuring system

Models:

10 = Housing diameter of 100 mm
 16 = Housing diameter of 160 mm

Materials:

E = Completely of stainless steel

Process connection:

15G = 2 x G 1/2 connection, male thread
 15N = 2 x 1/2" NPT, male thread
 S = Special-order connection (see table "Options and Accessories")

Vibration dampening:

0 = None
 1 = Glycerin-filled

Designs and measuring ranges:

K16 to H89 = See table "Measuring Ranges"

Electrical accessories:

0 = None

Options and accessories (more than one may be selected):

0 = None
 xxx = See table "Options and Accessories"

Technical Specifications:

Housing: Round gauge housing made of stainless steel 1.4301, d = 100 or 160 mm

Pressure-responsive element:

2 x Bourdon tube made of stainless steel 1.4571

Needle movement:

Brass

Glass face:

Instrument glass (4 mm)

Scale and needle:

Aluminum scale with white background and black graduations, black indicator needle

Process connection:

1/2" G or NPT (standard)
 1/4", 3/8" G or NPT (optional), all made of stainless steel 1.4571
 Other connections available upon request

Liquid-filled version:

Glycerin

Measuring ranges:

See table "Measuring Ranges"

Overload protection:

1.3 x end value

Media temp.:

-20° to +100°C

Accuracy:

Class 1.0

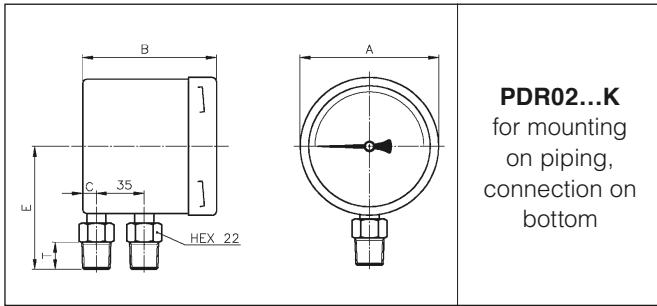
Protection type:

IP65

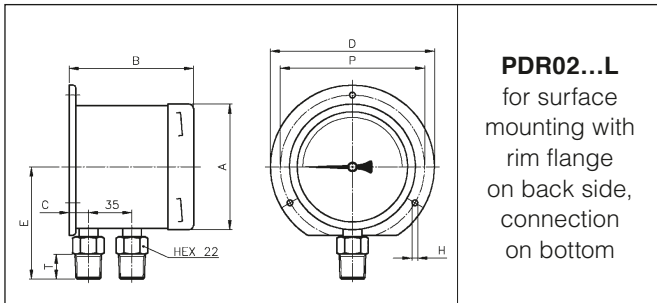
Options and Accessories:

Description:	Code
Scale in psi	P
Double scale in bar / psi	BP
Scale for differential pressure	SD
Special-order scale	SK...
Process connection G 1/4	08G
Process connection G 3/8	10G
Process connection 1/4" NPT	08N
Process connection 3/8" NPT	10N

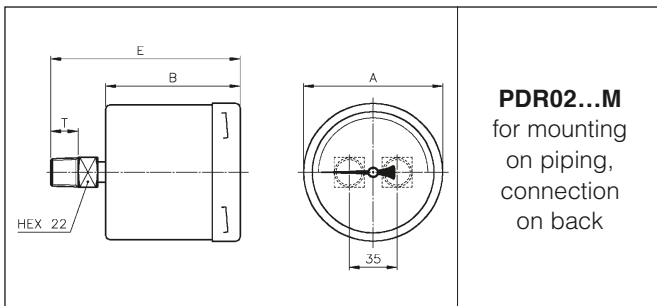
Dimensions:



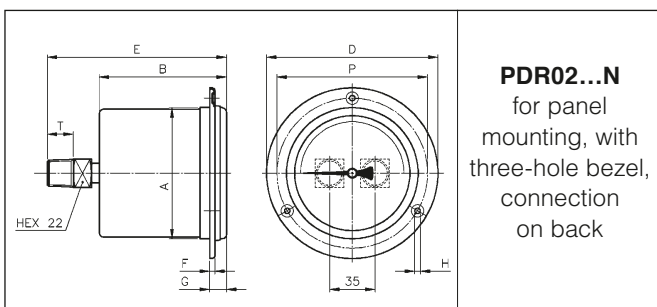
	Housing diameter (mm)	
	100	160
A	101,5	162
B	97	100
C	14	18
E	90	120
T	20	20



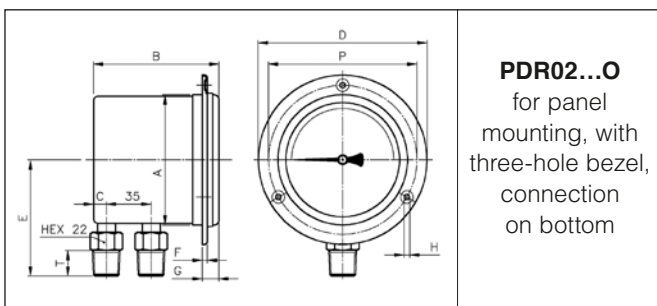
	Housing diameter (mm)	
	100	160
A	101,5	162
B	100	102
C	14	18
D	132	196
E	90	120
P	116	178
H	4,5	6
T	20	20



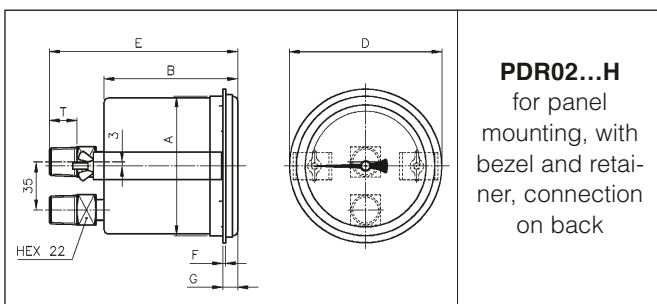
	Housing diameter (mm)	
	100	160
A	101,5	162
B	97	100
E	137	140
T	20	20



	Housing diameter (mm)	
	100	160
A	101,5	162
B	97	100
D	132	196
E	137	140
F	3,5	3
G	13	15,5
H	4,5	6
P	116	178
T	20	20




	Housing diameter (mm)	
	100	160
A	101,5	162
B	97	100
C	14	18
D	132	196
E	90	120
F	3,5	3
G	13	15,5
H	4,5	6
P	116	178
T	20	20



	Housing diameter (mm)	
	100	160
A	101,5	162
B	97	100
D	110	180
E	137	140
F	2	2
G	10,5	9
T	20	20

PKP Prozessmesstechnik GmbH 
Borsigstraße 24 · D-65205 Wiesbaden
☎ +49 (0) 6122-7055-0 · 📠 +49 (0) 6122-7055-50
Email: info@pkp.de · Internet: www.pkp.de

PKP Process Instruments Inc. 
10 Brent Drive · Hudson, MA 01749
☎ +1-978-212-0006 · 📠 +1-978-568-0060
Email: info@pkp.eu · Internet: www.pkp.eu

