

DR20

Paddle Wheel Flow Transmitter

- for low viscosity liquids
- large measuring range
- high quality bearings
- high accuracy
- essentially temperature-independent
- linear output signal
- small mounting dimensions
- measuring ranges: 2,5...50 l/min up to 35...580 l/min
- max. temperature: 100 °C, max. pressure: 10 bar



Description:

The flow transmitter model series DR20 work acc. to the paddle wheel principle. The medium flows unilaterally against the paddle wheel and puts it into rotation. This leads to a low response sensitivity combined with a high turndown ratio up to 1:20. The devices are in the version with a T-fitting for nominal sizes of DN 15 until DN 50 available. Therefore measuring ranges of initially 2,5 l/min up to 580 l/min can be covered.

In principle a weld on version can be used for many different pipe diameters. The analogue output is proportional to the flow rate and covers the range 0,3 until 5 m/s.

Typical applications:

The paddle wheel flowmeter of the type series DR20 can be used for flow measuring of all low viscous liquids that are not aggressive to the used materials.

Because of the high quality bearings the devices work very reliably.

Models:

Connection:	weld on nozzle (Type A) or T-fitting with R-thread
Housing:	stainless steel
Paddle wheel:	POM
Bearings:	sapphire / ruby
Shaft:	hard ferrite
Protection class:	IP65
Sensor:	Hall sensor / magnet
Accuracy:	+/- 2% FS
Power supply:	12...26 VDC
Output:	analogue output 4...20 mA or pulse output 125...32000 Hz, NPN
Temperature range:	-40...+100°C (130°C on request)
Max. pressure:	10 bar
Power consumption:	50 mA max.
Electr. connection:	cable 3 m

Measuring ranges:

DN	R	Measuring ranges l/min
15	1/2"	2,5...50
20	3/4"	5,5...92
25	1"	8...145
32	1 1/4"	14...240
40	1 1/2"	22...375
50	2"	35...580
A		0,3...5 m/s

The analogue output signal of 20 mA can be adjusted to another value as full scale in factory.
Please indicate with the order.
The pulse output can be factory set from min 125 Hz to max. 32000 Hz.

Order Code:

Order number: DR20. 15. Axxx. 0

Paddle wheel flow transmitter

Connection and measuring range:

15 = T-fitting, 1/2", 2,5...50 l/min
20 = T-fitting, 3/4", 5,5...92 l/min
25 = T-fitting, 1", 8...145 l/min
32 = T-fitting, 1 1/4", 14...240 l/min
40 = T-fitting, 1 1/2", 22...375 l/min
50 = T-fitting, 2", 35...580 l/min
A = weld on version for flow rates of 0,3...5 m/s

Output:

Axxx = 4...20 mA, xxx = adjustment 20 mA
Fxxx = pulse output, xxx = frequency
(125...32000 Hz, NPN)

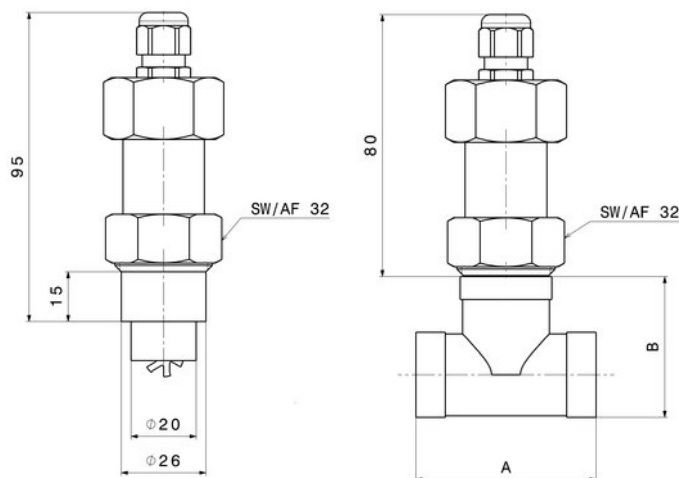
Options:

0 = without
1 = please specify in plain text

In the enquiry or order please indicate the following informations:

- Media viscosity, if different from water
- Pressure and temperature
- Mounting position and direction of flow

Dimensions:



Nominal size	Length A [mm]	Length B [mm]
DN 15	80	43
DN 20	55	43
DN 25	58	51
DN 32	65	62
DN 40	67	68
DN 50	78	81