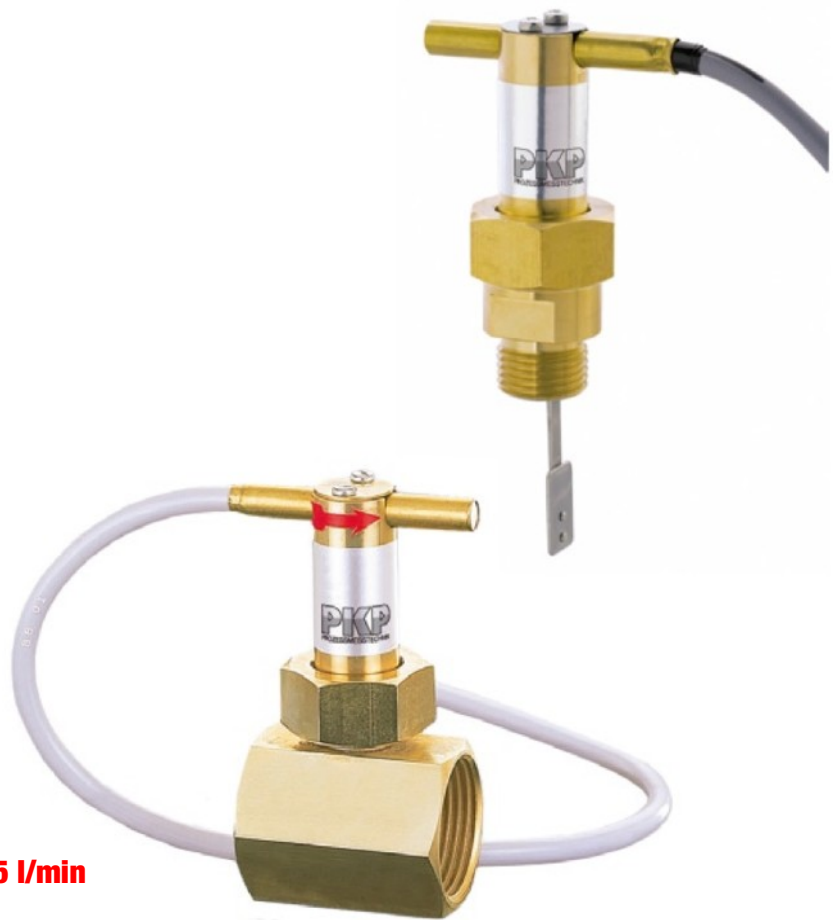


DP02

Paddle-Type Flow Switch with Cable Connection

- for liquids
- with and without T-fitting, for piping 3/8" to 6"
- design in brass, stainless steel or T-fitting of PVC
- causes only slight pressure drop
- pendulum system of stainless steel
- max. pressure: 16 bar
max. temperature: 110 °C
- switching ranges: 2,7...4,5 to 440...655 l/min



Description:

The flow switch model DP02 works according to the proven paddle- principle. The flowing liquid pushes against the surface area of a paddle mounted at the end of a pivoting arm. The dynamic pressure against the plate deflects the arm. Then a permanent magnet which is attached on the other end of the arm switches an adjustable reed contact. By moving the reed contact different switching points can be set.

Typical application:

The DP02 paddle flow switch is suitable for monitoring the switching point of low viscosity liquids. The setting of the switching point takes place within the process.

Models, Switching ranges:

Nominal Size DN	Switch on at [l/min] H ₂ O	Switch off at [l/min] H ₂ O	Q _{max.} [l/min] H ₂ O
DP02.1-4: with brass, stainless steel or PVC T-fitting			
10	2,7...4,5	1,7...3,5	40
15	4,5...6,5	3...5,5	45
20	8,5...12	6,6...11	80
25	13...20	11...19	130
32	17...26	15...25	160
40	28...45	27...43	300
50	45...58	43...56	500
DP02.5-7: with screw in thread made of brass or stainless steel			
50	44...65	40...60	500
65	75...115	70...105	750
80	120...175	110...165	1.400
100	190...285	175...265	2.500
125	310...450	280...420	2.900
150	440...655	410...600	3.300

Dimensions:

Nominal size DN	Connection Rp	SW [mm]	Z [mm]	I [mm]
DP02.1/2: with T-fitting made of brass/ brass nickel plated				
10	3/8	30	50	11
15	1/2	30	50	11
20	3/4	30	50	11
25	1	37	50	15
32	1 1/4	46	50	15
40	1 1/2	52	50	15
50	2	-	120	15
DP02.3: with stainless steel T-fitting				
10	3/8	30	50	11
15	1/2	30	50	11
20	3/4	30	50	11
25	1	-*	80	15
32	1 1/4	-*	95	15
40	1 1/2	-*	115	15
50	2	-	120	15
DP02.4: with PVC T-fitting				
10	-	-	54	16
15	-	-	54	16
20	-	-	66	19
25	-	-	79	22
32	-	-	96	26
40	-	-	116	31
50	-	-	143	38

* round housing

Order Code:

Order number:

DP02. 1. 10. 0

Paddle-type Flow Switch with cable connection

Model:

- 1 = T-fitting made of brass with female thread R
- 2 = T-fitting made of brass nickel plated with female thread R
- 3 = T-fitting made of stainless steel with female thread R
- 4 = T-fitting made of PVC (glued in connection)
upper part made of stainless steel
- 5 = screw in thread G 1/2 male, made of brass
- 6 = screw in thread G 1/2 male, made of brass nickel plated
- 7 = screw in thread G 1/2 male, made of stainless steel

Nominal size:

DP02.1-4:

- 10 = 3/8"
- 15 = 1/2"
- 20 = 3/4"
- 25 = 1"
- 32 = 1 1/4"
- 40 = 1 1/2"
- 50 = 2"

DP02.5-7:

- 00 = screw in thread G 1/2 suitable for all nominal sizes from DN 50

Options:

- 0 = without
- SPFxx = adjusted set point decreasing flow
- SPSxx = adjusted set point increasing flow
- 9 = please specify in plain text

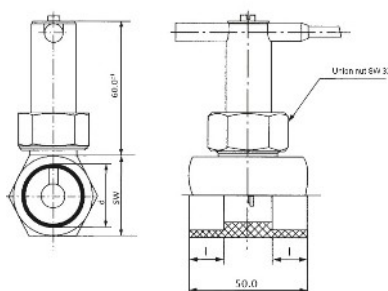
Technical Data:

Max pressure:	16 bar (brass and st. steel) 2,5 bar (PVC)
Max. medium-temperature:	110 °C (brass and st. steel) 60 °C (PVC)
Reed contact:	N/C, N/O, adjustable (standard / factory setting N/O, rising level)
Contact rating:	230 VAC/ 1,5 A, 80 W, 90 VA max.
Hysteresis:	5 %
Connection cable:	1,5 m length PVC
On request:	soldered version

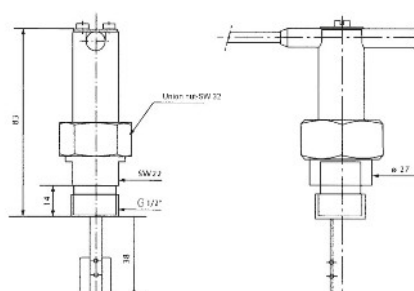
Materials:

T-fitting:	brass, st. steel 1.4571 or PVC
Paddle:	st. steel 1.4410
Union nut:	brass nickel plated
Magnet:	Ferrite OX 300

Standard version



Screw-in version



T-fitting PVC

