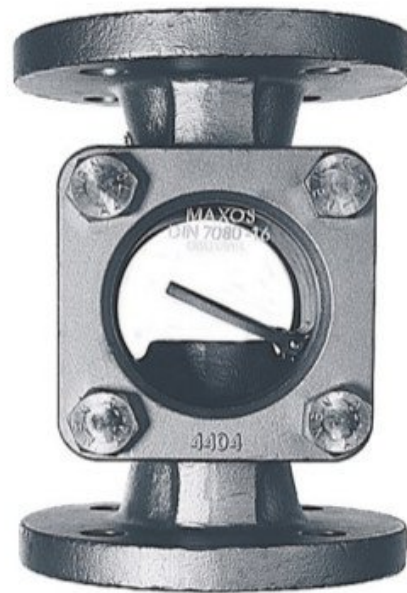


# DG11

## Sight Flow Indicator with Flanged Connection

- applicable for liquids and gases
- available with DIN or ANSI flanges
- standard with drip tube, flap or rotor optionally available
- materials: cast iron, cast steel or stainless steel
- for pipes from 1/2"/ DN 15 up to 8"/ DN 200
- for media-temperatures up to 300 °F/ 150 °C, higher ratings up to 546 °F/ 280 °C optionally available
- pressure rating: 232 psi/ PN 16, 363 psi/ PN 25, 580 psi/ PN 40, higher pressure ranges optionally available



### Description:

DG11 sight glasses are used to visually monitor the flow of liquids in pipe systems.

Depending on the type of liquid and flow volume, these devices are used with a fully clear bore or with a flap or rotor (for transparent liquids).

DG11 sight flow indicator permits reliable monitoring of the function and performance of single devices or entire systems.

### Models:

### Applications:

Because they are available in a variety of materials and designs, DG11 sight glasses can be used in almost any kind of pipe system.

- DG11.S:** standard model with drip tube (can be installed in any position)
- DG11.K:** with flap (can only be installed horizontally or for forward vertical flows)
- DG11.RK:** with rotor made of POM (Tmax. 248 °F / 120 °C, can be installed in any position)
- DG11.RP:** with rotor made of PTFE (Tmax. 500 °F / 260 °C, can be installed in any position)

**Advice: Consider flow-direction**

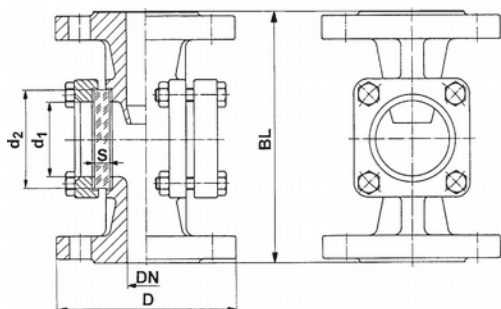
### Housing materials (wetted parts):

- DG11.x.G:** cast iron GG 25 (EN-GJL-250) varnished
- DG11.x.S:** cast steel GS-C 25 (1.0619/GP2406H)
- DG11.x.E:** stainless steel (1.4408)

### Sight Glass Material:

- DG11.x.x.N:** soda-lime glass (Tmax. 300 °F/ 150 °C) DIN8902
- DG11.x.x.B:** borosilicate glass (Tmax. 536 °F/280 °C) DIN7080

### Dimensions:



**Advice:** from DN 65 round glass cover

| connection<br>(DIN/ ANSI) | D<br>[mm]<br>PN 16 | BL<br>[mm] | d1<br>[mm] | d2<br>[mm] | S<br>[mm]<br>PN 16 | weight [kg]* |      |
|---------------------------|--------------------|------------|------------|------------|--------------------|--------------|------|
|                           |                    |            |            |            |                    | G            | S+E  |
| 15 / 1/2"                 | 95                 | 130        | 32         | 45         | 10                 | 3,1          | 3,6  |
| 20 / 3/4"                 | 105                | 150        | 32         | 45         | 10                 | 4,0          | 4,0  |
| 25 / 1"                   | 115                | 160        | 48         | 63         | 10                 | 6,5          | 6,5  |
| 32 / 1 1/4"               | 140                | 180        | 48         | 63         | 12                 | 7,0          | 7,5  |
| 40 / 1 1/2"               | 150                | 200        | 65         | 80         | 12                 | 10,5         | 11,0 |
| 50 / 2"                   | 165                | 230        | 80         | 100        | 15                 | 14,0         | 14,5 |
| 65 / 2 1/2"               | 185                | 290        | 80         | 100        | 15                 | 22,5         | 23,0 |
| 80 / 3"                   | 200                | 310        | 100        | 125        | 20                 | 30,0         | 32,0 |
| 100 / 4"                  | 220                | 350        | 125        | 150        | 25                 | 40,0         | 42,0 |
| 125 / 5"                  | 250                | 400        | 150        | 175        | 25                 | 47,0         | 47,0 |
| 150 / 6"                  | 285                | 480        | 175        | 200        | 30                 | 67,0         | 67,0 |
| 200 / 8"                  | 340                | 600        | 175        | 200        | 30                 | 118          | 118  |

bigger sizes on request

\*) weight without installation

### Order Code:

Order number: **DG11. RK. E. B. 25. A. 10. 0**

**Sight glass flow indicator with flanged connection**

#### Designs:

- S = standard-design with drip tube  
 K = with flap  
 RK= with plastic rotor (POM)  
 (only up to DN 40, 1 1/2")  
 RP= with plastic rotor (PTFE)

#### Housing materials:

- G = cast iron (PN 16 only)  
 S = cast steel  
 E = stainless steel

#### Sight glass material:

- N = soda lime glass  
 B = borosilicate glass

#### Nominal size:

- 15...250 = ANSI 1/2" to ANSI 8"  
 DN 15 to DN 200  
 see table "Dimensions"

#### Process connection:

- A = ANSI Flange\*  
 D = DIN Flange

#### Pressure rate:

- 10 = PN 10 (standard from DN 150 and above)  
 16 = PN 16 (standard up to DN 125, from DN 150 only with borosilicate glass) \*\*  
 25 = PN 25 (only up to DN 100 with borosilicate glass)  
 40 = PN 40 (only up to DN 80 with borosilicate glass)

#### Options:

- 0 = without  
 1 = Please specify in plain text

\*) for 150 lbs only (300 lbs on request), ANSI flange in cast iron not for DN 100  
 \*\*) at sizes DN 15 and DN 20 in combination with cast steel or st. st. PN 40 is standard

### Technical Data:

**Materials:** housing and sight glass: see description:  
 gasket: graphite  
 (other gasket materials on request)

**Max. pressure:** 145 psi/ 232 psi (10 / 16 bar)  
 (higher pressure ratings optionally available)

#### Max. media-temperature:

- DG11.S/K...:** 300 °F/ 150 °C (536 °F/ 280 °C with borosilicate glass)  
**DG11 RK...:** 248 °F/ 120 °C  
**DG11.RP...:** 300 °F/ 150 °C (260 °C with borosilicate glass)

### Special versions on request:

- sight glass plates sealed acc. to DIN 28121
- sight glass made of META glass (metall-merged sight glass plates acc. to DIN 7079) for particularly dangerous media
- welded version
- no dead space version
- angle- or 3-way version



**PKP Prozessmesstechnik GmbH**  
 Borsigstr. 24 • D-65205 Wiesbaden  
 ☎ +49 (0) 6122-7055-0 • 📠 +49 (0) 6122 7055-50  
 ✉ info@pkp.de • 🌐 www.pkp.de

**PKP Process Instruments Inc.**  
 10 Brent Drive • Hudson, MA 01749  
 ☎ +1-978-212-0006 • 📠 +1-978-568-0060  
 ✉ info@pkp-usa.com • 🌐 www.pkp-usa.com