

DG08

Ball-Type Flow Indicator

- for liquids and gases
- robust stainless steel design
- max. temperature 200 °C
max. pressure 16 bar
- for horizontal installation
- for nominal pipe sizes
from 1/4" to 1 1/2"



Description:

The DG08 mechanical flow indicator is used for visual verification of the flow of liquids or gases. The liquid or gas being monitored lifts the PTFE ball from its valve seat. As the flow increases, the ball in the domed sight glass becomes increasingly visible. These devices are made of high-quality materials, allowing them to be used with a great variety of liquids or gases.

Typical application:

DG08 mechanical flow indicators are used to monitor the flow of liquid or gaseous media. These devices are especially suited for use in industrial systems and for process monitoring as well as for basic monitoring of compressors, ventilators, fans and many other types of similar equipment.

Models:

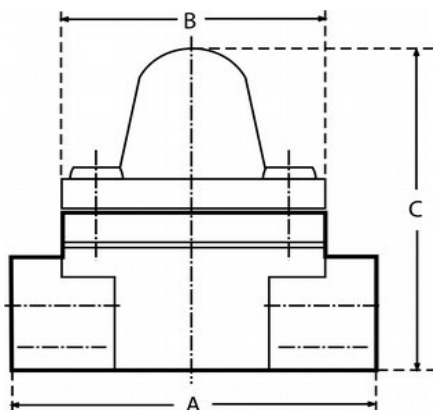
Material: housing from stainless steel

Flow rates:

Connection	Ball / initial movement		Ball / fully visible	
	water [l/min]	air [l/min]	water [l/min]	air [l/min]
G 1/4	0,1	2,5	1	9
G 3/8	0,1	3	1	10
G 1/2	0,1	10	1	50
G 3/4	2,4	60	5,2	100
G 1	2,7	75	5,5	100
G 1 1/4	11	100	16	180
G 1 1/2	16	110	21	180

Dimensions:

Connection	A [mm]	B [mm]	C [mm]	Weight [kg]
G 1/4	76	63	79	0,72
G 3/8	76	63	79	0,69
G 1/2	76	63	79	0,65
G 3/4	89	63	95	1,3
G 1	89	63	95	1,25
G 1 1/4	117	75	125	2,5
G 1 1/2	117	75	125	2,35



Order Code:

Order number: DG08. E. 10. 0

Ball-type flow indicator

Material:

E = stainless steel

Connection:

08 = G 1/4 female thread	08N = 1/4" NPT
10 = G 3/8 female thread	10N = 3/8" NPT
15 = G 1/2 female thread	15N = 1/2" NPT
20 = G 3/4 female thread	20N = 3/4" NPT
25 = G 1 female thread	25N = 1" NPT
32 = G 1 1/4 female thread	32N = 1 1/4" NPT
40 = G 1 1/2 female thread	40N = 1 1/2" NPT

Options:

0 = without

1 = please specify in plain text

Technical Data:

Max. pressure: 16 bar

**Max. media-
temperature:** 200 °C

Materials:

Housing: stainless steel 1.4408, ASME 316, ASTM - A - 351 CF8M

Housing cover: stainless steel

Sight class: borosilicate glass

Pins: stainless steel

Kugel: PTFE

O-Ring: FKM

Dichtung: Klingersil C-4400 (non-wetted part)

Installation position: for horizontal installation only

Maximum flow velocity with liquids should not be more than 3 m/s.