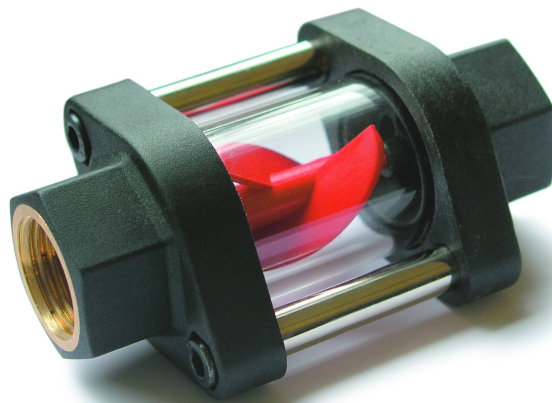


# DG03

## Turbine Flow Indicator

- applicable for liquids and gases
- robust plastic housing
- any flow direction
- turbine 360° visible
- bidirectional
- max. temperature 100 °C
- max. pressure 10 bar



### Description:

The flow indicator DG03 are used for a reliable visualization of transparent liquids. An indicative red turbine wheel rotates inside a glass-tube proportional to the flow. In this way it provides an indication of the flow rate at present.

The devices have a 360° vision of the turbine. They are built for a long working life, thanks to the design of the turbine's bearings.

### Typical applications:

The flow indicator DG03 are used for monitoring of liquids with low and medium viscosities in pipe systems.

## Nominal diameters and flow rates:

Connection G	Qmax recom. l/min water	Start up turbine l/min		
		water	40 mm <sup>2</sup> /s	41-150 mm <sup>2</sup> /s
G 1/4	6	0,6	2,5	3,5
G 3/8	10	1,2	3	4
G 1/2	15	1,2	3	4
G 3/4	30	2,1	3,7	5
G 1	50	2,1	3,7	5

## Model Code:

Order Number: DG03. 10. 0

Turbine flow indicator

### Connection:

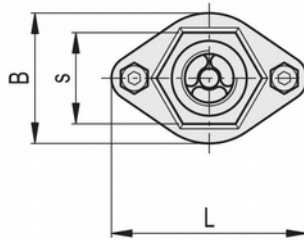
08 = G 1/4 female, design A  
 10 = G 3/8 female, design A  
 15 = G 1/2 female, design A  
 20 = G 3/4 female, design B  
 25 = G 1 female, design B

### Special Features:

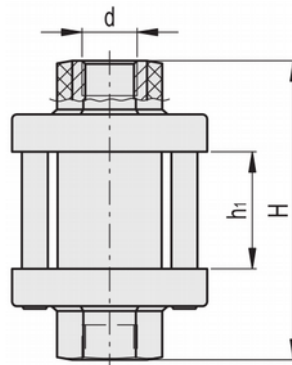
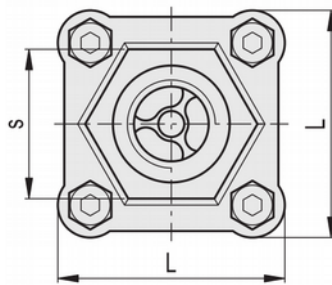
0 = without  
 1 = please specify in plain text

## Dimensions:

Design A



Design B



## Technical Data:

**Max. pressure:** 140 psi/ 10 bar  
**Medium temperature:** -20...+100°C (-4...+212°F)  
**Ambient temperature:** -20...+70°C (-4...+158°F)  
**Installation position:** any

## Materials:

**Housing:** PPh  
**Connection:** brass CW614N  
**Turbine:** PPh  
**Axis:** PPh  
**Bearing:** stainless steel balls 1.4301  
**Glass:** borosilicate glass  
**Gasket:** NBR

Maximum flow velocity with liquids should not be more than 3 m/s.

d	Design	H [mm]	h1 [mm]	L [mm]	s [mm]	Weight [kg]
G 1/4	A	66	22	44	20	0,11
G 3/8	A	92	36	60	28	0,18
G 1/2	A	92	36	60	28	0,18
G 3/4	B	114	46	70	46	0,60
G 1	B	114	46	70	46	0,60