



# ***Instruction Manual***

## ***DS04***

***All Metal Variable Area Flowmeter and Switch  
- High Pressure Version -***



PKP Prozessmesstechnik GmbH  
Borsigstraße 24  
D-65205 Wiesbaden-Nordenstadt  
Tel.: ++49-(0)6122-7055-0  
Fax: ++49-(0)6122-7055-50  
Email: [info@pkp.de](mailto:info@pkp.de)

# Table of Contents

---

Safety Information.....	2
Overview.....	3
Installation.....	4
Connecting devices equipped with Reed switches.....	6
Electrical connection.....	8
Setting the switch point.....	11
Electrical connection of analogue transmitter SU20.....	12
Troubleshooting guide.....	13
Maintenance / Maintenance plan.....	14
Degree of protection (IP-Code).....	14
Returns.....	14

## Safety Information

---

### General Instructions

To ensure safe operation, the device should only be operated according to the specifications in the instruction manual. The requisite Health & Safety regulations for a given application must also be observed. This statement also applies to the use of accessories. Every person who is commissioned with the initiation or operation of this device must have read and understood the operating instructions and in particular the safety instructions!

The liability of the manufacturer expires in the event of damage due to improper use, non-observance of this operating manual, use of insufficiently qualified personnel and unauthorized modification of the device.

### Proper Usage

The variable area flowmeters of the DS04 series are used exclusively for monitoring and indicating continuous flows of gaseous and liquid media that do not attack the materials used. All other usage is regarded as being improper and outside the scope of the device.

#### Process conditions:

liquid media: -20...+100 °C (optional 160 °C), 200 bar (brass), 300 bar (VA)

gaseous media: -20... +80 °C, 200 bar (brass), 300 bar (VA)

All other usage is regarded as being improper and outside the scope of the device.

In particular, applications in which shock loads occur (for example, pulsed operation) should be discussed and checked in advance with our technical staff.

In particular applications in which shock loads occur (e.g. intermittent operation) should be discussed and checked in advance with our technical staff.

Do not use flow monitors with fast-switching valves.

The series DS04 flow meter devices should not be deployed as the sole agents to prevent dangerous conditions occurring in plant or machinery. Machinery and plant need to be designed in such a manner that faulty conditions and malfunctions do not arise that could pose a safety risk for operators.

### ***Dangerous substances***

For dangerous media such as e.g. Oxygen, Acetylene, flammable or toxic substances as well as refrigeration systems, compressors, etc. must comply with the relevant regulations beyond the general rules.

### ***Qualified Personnel***

The DS04 devices may only be installed by trained, qualified personnel who are able to mount the devices correctly. Qualified personnel are persons, who are familiar with assembling, installation, placing in service and operating these devices and who are suitably trained and qualified.

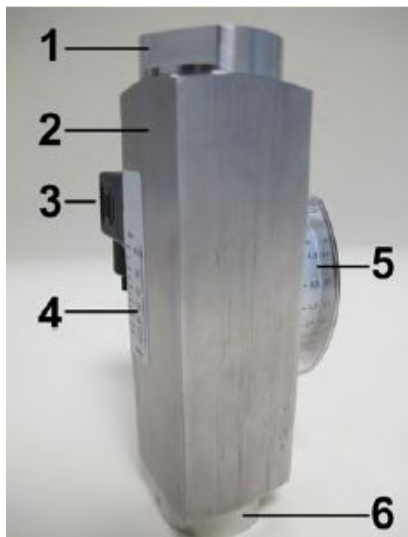
### ***Inward Monitoring***

Please check directly after delivery the device for any transport damages and deficiencies. Additional with reference to the accompanying delivery note the number of parts must be checked.

Claims for replacement or goods which relate to transport damage can only be considered valid if the delivery company is notified without delay.

## ***Overview***

---



1: Process connection (outlet)

2: Device body

3: Switch contact and female socket or switch contact with cable

4: Switch point adjustment scale

5: Display housing with display scale and pointer mechanism

6: Process connection (inlet)

### **Switch point adjustment scale:**

A scale is applied to the device body, to which the desired switch point can be adjusted.



### **Display scale:**

On the device, a display housing is mounted with integrated indicator scale and pointer movement. The pointer on the scale indicates the current flow value.

## **Installation**

### ***Process connection:***

The following requirements must be observed to avoid damage to the flow monitor or the system:

- ◆ a process connection suitable for the device must be provided by the customer
- ◆ check connection size and screw-in depth
- ◆ use suitable sealants (liquid sealants damage the flow monitor if they run in)
- ◆ seal properly

### ***Ambient conditions:***

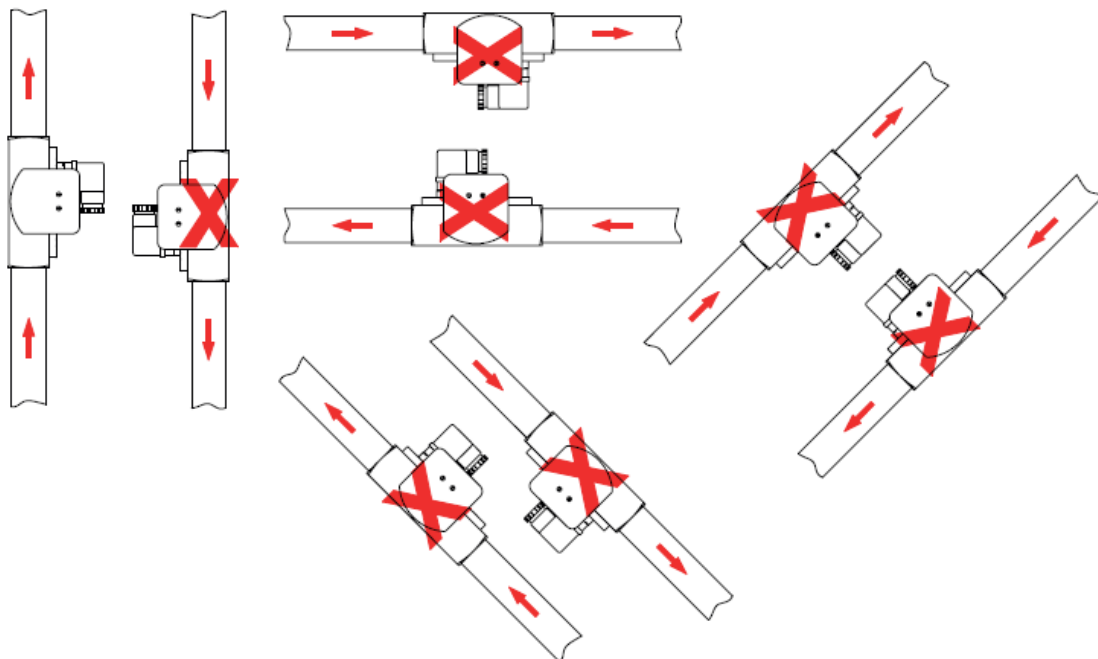
- ◆ do not install the flow monitor as a supporting part in a pipe system
- ◆ the medium must not carry solid bodies. Magnetic particles accumulate on the magnetic float and impair its function.
- ◆ Check corrosion and antifreeze agents from the application for compatibility.

### **Notice:**

The following requirements must be observed, otherwise the function of the flow monitor is impaired or measurement results are falsified:

- ◆ external magnetic fields will influence the switch contact. Keep sufficient distance to magnetic fields (e.g. electric motors).
- ◆ piping, process connections or supports made of ferromagnetic material influence the magnetic field of the device. Keep a space of minimum 100 mm to those materials (e.g. steel).
- ◆ changes in cross-section, branch-offs or arcs in the pipe system impair measuring accuracy. Ensure that the unimpeded flow sections are maintained (in front of instrument 10 x nominal diameter, behind the instrument 5 x nominal diameter). Never reduce the pipe diameter immediately before the device.
- ◆ in the case of liquid media, take appropriate steps to ensure that the device is vented.
- ◆ to ensure measuring accuracy, the device must always be completely filled with medium.
- ◆ vent the pipeline. If there are air pockets in the line during the measurement, this could result in damage to the device caused by hydraulic shock. This may cause malfunctions.
- ◆ ensure that the plant is operating without cavitation. Cavitation may result in malfunctions and damage to the device.
- ◆ ensure that the medium is flowing continuously. Pulse-like staggered loads could destroy the device. This may result in serious injury to the user.
- ◆ if the medium is contaminated by solids, a strainer must be installed before the device (e.g. SF00 or SF01 from PKP)

### ***Direction of flow:***



Only install the flow monitor in one of the positions displayed in the drawing. The medium must flow in the direction of the arrow (from a low to a high scale value).

## Connecting devices equipped with Reed switches

---

Reed switches are basically designed for small contact ratings. To connect a load with higher power consumption it is indispensable to use a contact protection relay (e.g. our series MSR01)

If you connect directly a load to a Reed contact the following recommendations should be considered.

None of the contact rating values printed on the switching unit must not to be exceeded, even momentarily. This is valid for each of the given values individually: voltage, current, power. The Reed contact integrated in the switching unit is very sensible to electrical overload

Danger of overload is given by the following applications:

- inductive load
- capacitive load
- lamp load

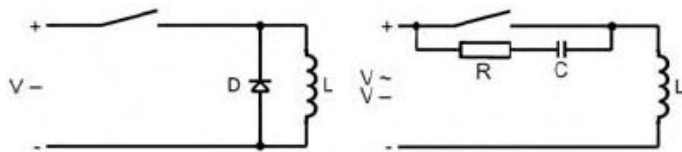
### Inductive Load

Inductive loads consist e.g. of relay, contactors, solenoid valves, motors, electric engines, etc.



**WARNING:** Voltage spikes at shut down (up to 10 times of nominal voltage)

Protective measures: (examples)



(Flyback diode, e.g. type 1N4007)

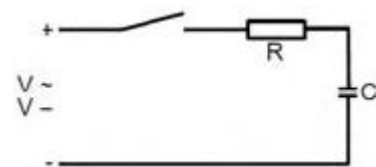
### Capacitive Load

Capacitive loads consist e.g. of long connection cables or capacitive consumers.



**WARNING:** High current spikes at switching on (this will exceed the nominal current)

Protective measures: (examples)



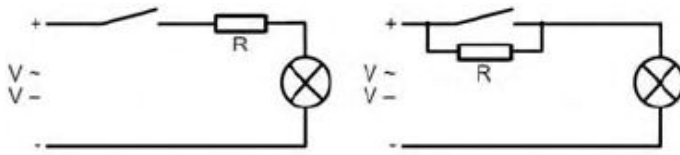
Limitation of current by a resistor

## Lamp Load

Lamp loads consist e.g. by light bulbs, starting motors .

**⚠ WARNING:** High current spikes at switching on, because the glowing spiral has low resistance at low temperature.

Protective measures: (examples)



Limitation of current by a resistor or preheating of the glowing spiral.

## Connecting to a PLC

There is no need for protective measures by connecting the Reed switch to a PLC. The Reed contacts are plated by Tunsten, Gold, and Rhodium located in a protective atmosphere. They can be directly connected to the input terminals of a PLC without problems.

## RC-Circuits as protective measures (Boucherot cell, Snubber)

In practice the following values of resistor/capacitor cells give good results. Nevertheless, the values given in the following tables are only recommendations for general purposes. But it cannot be guaranteed that for specific applications more adequate Boucherot cells may exist.

### For Reed switches of 10 – 40 VA

Voltage [V]	Resistance [Ohm]	Capacitance [nF]
230	1500	330
115	470	330
48	220	330
24	100	330

### For Reed switches of 40 – 100 VA

Voltage [V]	Resistance [Ohm]	Capacitance [nF]
230	1000	330
115	470	330
48	100	330
24	47	330

## Electrical connection

The switch contacts employed in these devices are potential free and do not require a power source.

### **Note:**

Switch contacts and flow monitor have been optimally harmonized. After replacement of a switch contact, the switch point must be readjusted.

The contacts open/change when the flow rate falls below the set value.

### **Grounding of the device:**

When installing the device in a pipeline, make sure that the device is grounded via the pipeline. This prevents dangerous potential differences from occurring



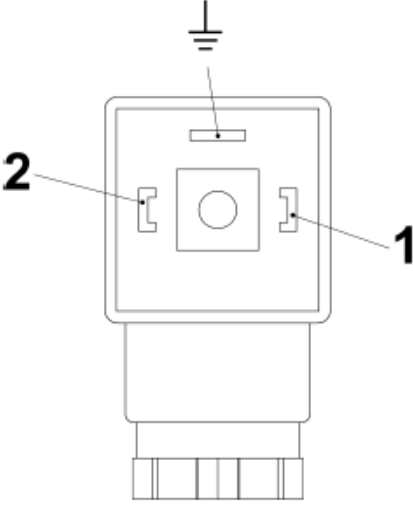
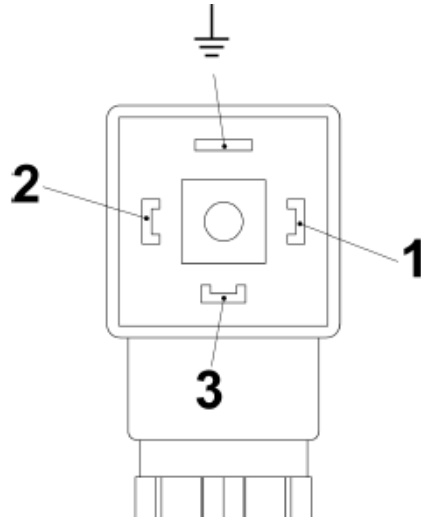
### **Switching capacity of contacts:**

Type	Size	Contact function	Switching capacity*		
			Angle plug IP65	M12x1 plug IP67	cable connection (1 m) IP67
DS04.1	1/4"	1 = N/O	250 V / 3 A / 100 VA		
DS04.1A	3/8"	2 = SPDT	250 V / 1,5 A / 50 VA, min. load: 3 VA		
DS04.2	1/2"	2X = SPDT for SPS 3ST5 = Ex-N/O, T5* 3ST6 = Ex-N/O, T6* 3UT5 = Ex-SPDT, T5* 3UT6 = Ex-SPDT, T6*	250 V / 1 A / 60 VA	-/-	-/-
DS04.3	3/4"		-/-	-/-	250 V / 2 A / 60 VA (2 m cable)
DS04.4	1"		-/-	-/-	250 V / 1 A / 30 VA, min load: 3 VA (2 m cable)



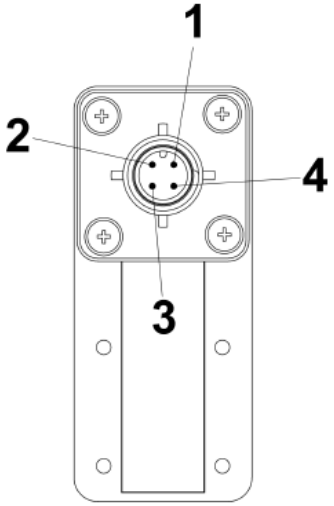
\* Exact max. switching capacity: see ATEX documents



**Switching contact with connector acc. to EN 175301-803:**


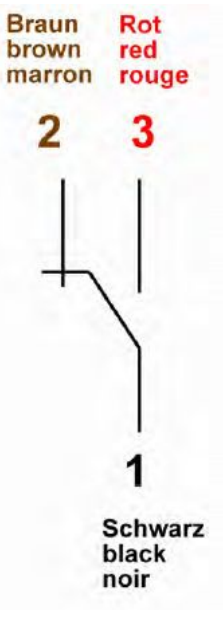
Normally Open (NOC)	Change Over (COC)
	
Switch position under no-flow condition	Switch position under no-flow condition
 <p data-bbox="159 1019 542 1052">The ground-pin is not used</p>	 <p data-bbox="805 1019 1189 1052">The ground-pin is not used</p>

**Switching contacts with plug connector M12x1** (mating connector not included in delivery)

Normally Open (NOC)	Change Over (COC)
	
	
Switch position under no-flow condition	Switch position under no-flow condition

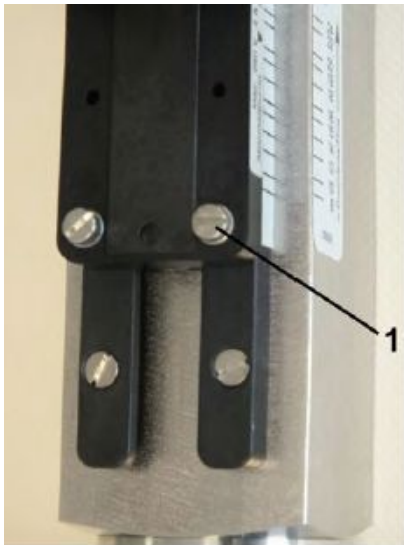
**Switching contact with cable:**

The individual cores of the cable are numbered according to the following connection diagram:

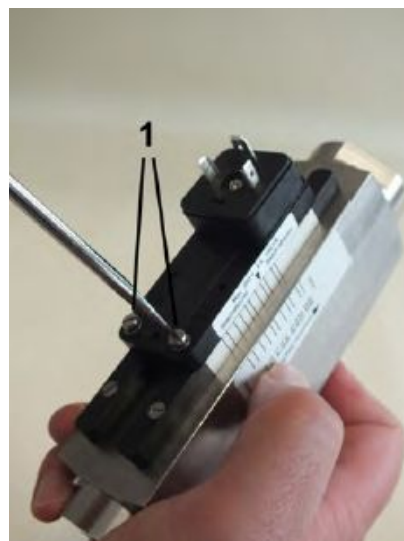
Normally Open (NOC)	Change Over (COC)
	
Switch position under no-flow condition	Switch position under no-flow condition

## Setting the switch point

The following instructions describe the procedure for a Normally Open Contact (NOC). The actual state (open or closed), can be determined using a continuity meter.



1. Loosen the switch contact set screws (1) using a screwdriver
2. Slide the switch contact to the flow value to be monitored. Make sure that the arrow on the switch contact label is in exact alignment with the desired flow value on the body scale.
3. Re-tighten the switch contact housing set screws (1) using a screwdriver. Observe the correct tightening torque of 0,4 Nm.



The set switch point corresponds to the switch-off point of the switch contact by decreasing flow.

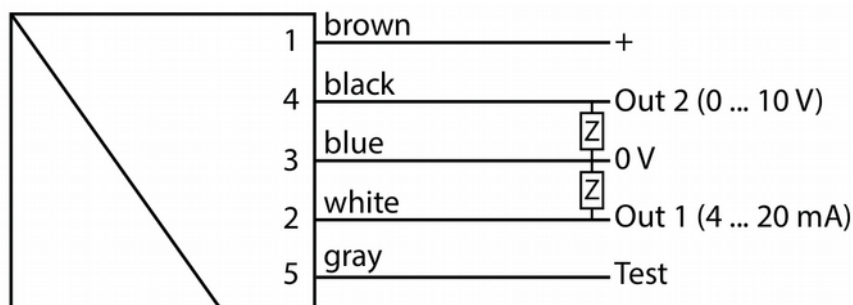
## Electrical connection of analogue transmitter SU20

### Attention:

We recommend using only shielded connection cables.  
The units are equipped with an integrated electronic unit and are ready for operation immediately after installation and connection.  
Pin 5 must not be contacted electrically! Ideally, use a 4-pole cable.  
Before connecting the unit electrically, make sure that the supply voltage matches the required one: 24 V<sub>DC</sub> (19...30 V<sub>DC</sub>).  
Before connecting the unit electrically, the supply voltage must be switched off.  
The analogue output is factory-set to the specified measuring range.

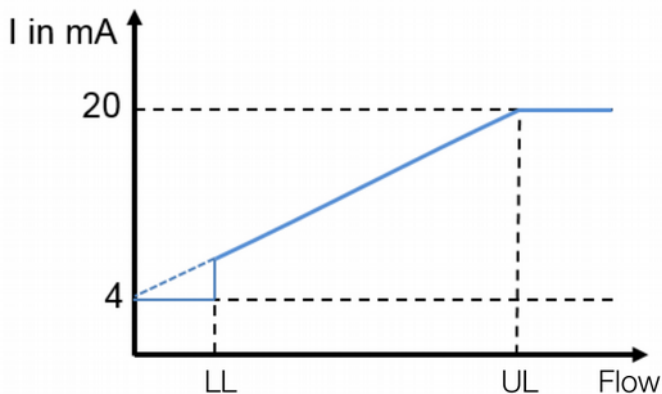


### Connection:

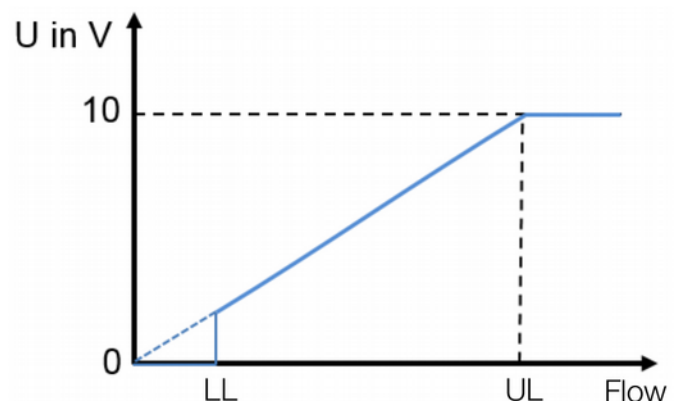


### Characteristics:

Current-Flow characteristic:



Voltage-Flow characteristic:



LL: lower limit of measuring range  
UL: upper limit of measuring range

### Operating conditions:

Operating temperature: -20...+70 °C  
Storage temperature: -20...+80 °C  
Accuracy\*: ± 1 % of full scale

\*The actual accuracy depends on the flow sensor used

## Troubleshooting guide

Fault description	Cause	Remedy
The switch contact does not switch	No medium flowing through flow monitor	Check that medium is flowing through the pipeline
	Flow is too low or the switch contact is set too high	Adjust the switch contact to a lower flow rate
		Use the device at another measuring range
		Increase the flow rate
	Incorrect reduction fitting or pipe diameter is too small	Correct pipe diameter
	Float is stuck	Disassemble and clean the device
	Switch contact is defective	Remedy the cause of the defect (short-circuit, overload)
		Replace the switch contact
Switch contact is permanently switched	Flow is too high or the switch contact is set too low	Reduce the flow
		Adjust the switch contact to a higher flow rate
		Use the device at another measuring range
Switch contact is permanently switched	Float is stuck	Disassemble and clean the device
	Switch contact is defective	Remedy the cause of the defect (short-circuit, overload)
		Replace the switch contact
The switch point is not the same as the actual flow rate	Improper scale installed for media used	Request proper conversion table or scale for media used
	Incorrect reduction fitting or pipe diameter is too small	Correct pipe diameter
	Device is dirty	Disassemble and clean the device
	Device is defective	Remove device from system and contact PKP

## ***Maintenance / Maintenance plan***

---

### **Intervals for replacing wear parts**

DS04 type flow monitors require very little maintenance due to the small number of moving parts. The intervals for the replacement of wear parts depend significantly on the operating conditions as well as on the composition of the medium flowing through the device. For this reason, no intervals have been set by the manufacturer. The operator must determine suitable intervals based on the local conditions and circumstances.

### **Maintenance work:**

- ◆ Visual inspection for dirt/soiling
- ◆ Visual inspection for free movement of float
- ◆ Visual inspection for leaks from the device
- ◆ Check function of switch contact

**For detailed information on maintenance and cleaning of the device, please refer to a separate manual. Please ask for them if required.**

## ***Degree of protection (IP-Code)***

---

Process connection	Specification of connection material	Degree of protection
EN 175301-803 with gland	Ø of connection cable: 6-8 mm	IP65
M12x1	Plug connector M12x1	IP67
Cable	--	IP67

## ***Returns***


---

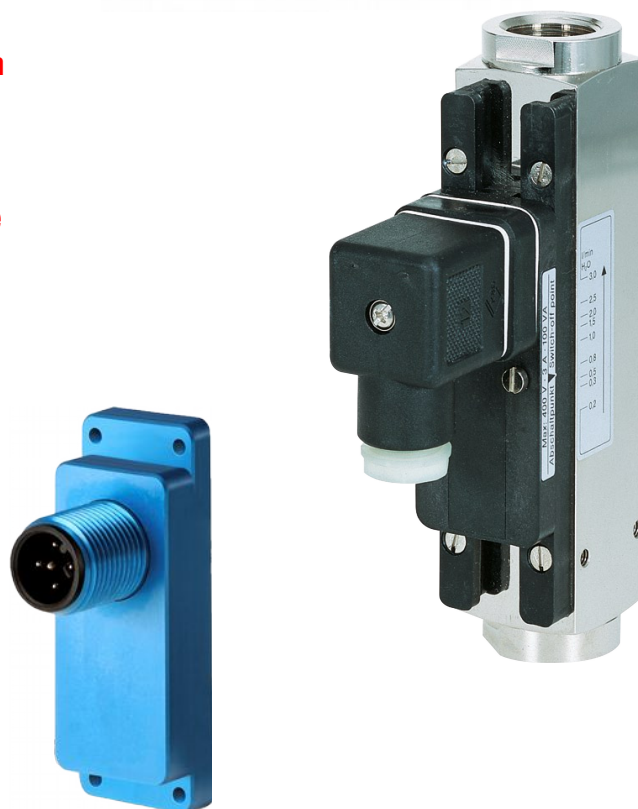
For returns please contact us:

PKP Prozessmesstechnik GmbH  
Info@pkp.de  
+49 (0) 6122-7055-0

# DS04

## Variable Area Flowmeter and Switch for High Pressure Applications

- applicable for low viscosity liquids and gases
- small mounting dimensions
- brass (nickel plated) or stainless steel version
- high switching accuracy
- robust design without a measuring glass tube
- for process pressure up to 300 bar
-  optional Ex- version acc. to ATEX
- analogue transmitter 4...20 mA optional
- $P_{max}$ : 300 bar,  $T_{max}$ : 160 °C



### Description:

The flowmeter and switch model DS04 works according to a modified variable area principle.

The float is guided in an upward tapered measuring tube. The flowing medium moves the float in the flow direction. An externally mounted pointer indicator is magnetically coupled to the float and thus, following the float position, indicates the flow rate on a scale.

A Reed contact is mounted outside the meter in a sealed housing. When the float reaches the position of the Reed contact the switch will close. With higher flows the float moves further upward until it reaches a built-in float stop, still keeping the switch closed. This ensures a bistable switch function at any time. The Reed contact is adjustable over the full measuring and switching range of the meter.

### Typical application:

The variable area flowmeters and monitors DS02 are used to measure and monitor continuous flow rates of low-viscosity liquids or gaseous media.

Areas of applications are:

- cooling systems
- engineering
- medical technology
- pharmaceutical and chemical industries
- research and development

## Models:

### Measuring ranges:

water: 0,1–1,5 l/min ... 4–50 l/min  
air: 1–28 NI/min ... 200–1450 NI/min  
(referenced to 1 bar abs, 20°C)

**Materials:** brass (nickel plated) or  
stainless steel versions

## Technical Data:

**Max. pressure:** brass version: 200 bar  
stainless steel version: 300 bar

**Pressure loss:** 0,02–0,2 bar (for liquids)  
0,02 – 0,4 bar (for gases)

**Max. media-temperature:** 100 °C for liquids (optional 160 °C)  
80 °C for gases,  
Ex-devices acc. to. ATEX-marking

**Operating temp.:** 70 °C with analogue transmitter AZ06

**Electr. Con.:** angle plug acc. to EN 155301-803,  
Form A (DIN 43650),  
Ex-contact with 2 m cable,  
**optional:** cable connection  
round plug M12 x 1 acc. to EN 50044  
angle plug with LED or glow lamp

**Accuracy:** ± 5 % of full scale for liquids  
± 10 % of full scale for air

**Mounting position:** vertical

## Materials:

### Brass version (nickel plated):

Wetted parts:  
float: brass nickel plated (for liquids)  
POM (for gases)  
threaded rings: brass  
gaskets: NBR (optional FKM, EPDM)

all other wetted parts: brass nickel plated

### Stainless steel version 1.4571:

Wetted parts:  
float: stainless steel 1.4571 (for liquids)  
POM (for gases)  
gaskets: FKM  
(optional NBR, EPDM)

all other wetted parts: stainless steel 1.4571

## Order Code:

**Order Number:** DS04. 3. 1. 1. WA06. 1. 1. 1. 0

**variable area flow meter-  
and switch**

### Connection female thread:

1 = G 1/4 1N = 1/4" NPT  
1A = G 3/8 1AN = 3/8" NPT  
2 = G 1/2 2N = 1/2" NPT  
3 = G 3/4 3N = 3/4" NPT  
4 = G 1 4N = 1" NPT

### Material:

1 = brass nickel plated  
2 = stainless steel 1.4571

### Scale:

1 = for water  
2 = for air (at 1 bar abs., 20 °C)

### Measuring ranges:

**Water** **Air**  
**DS04.1, DS04.1A and DS04.2:**

WA01 = 0,1–1,5 l/min LA01 = 1–28 NI/min  
WA02 = 0,2–3 l/min LA02 = 4–60 NI/min  
WA03 = 0,3–8 l/min LA03 = 6–160 NI/min  
WA04 = 1–12 l/min LA04 = 20–240 NI/min

### DS04.2 and DS04.3:

WA05 = 2–18 l/min LA05 = 40–360 NI/min

### DS04.3 or DS04.4:

WA06 = 3–35 l/min  
WA07 = 4–50 l/min LA07 = 60–700 NI/min

### only DS04.4:

LA08 = 200–1450 NI/min

**Addition S...= special scale**

### Flow indicator:

0 = switch only, without flow indicator  
1 = flow meter and -switch, with flow indicator

### Number of contacts:

0 = without contact (only for devices with indication and/or AZ06)  
1 = 1 contact  
2 = 2 contacts

### Contact function / Analogue output:

(contact or analogue transmitter available)

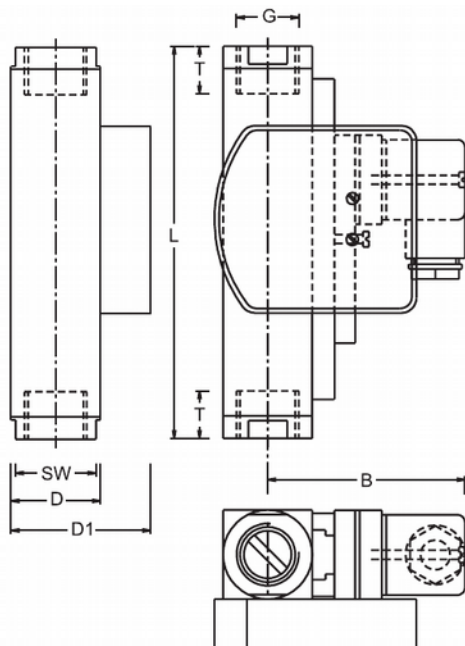
0 = without  
1 = N/O  
2 = SPDT  
2X = SPDT for SPS application  
3ST5 = Ex-N/O, T5 (100 °C), with 2 m cable  
3ST6 = Ex-N/O, T6 (80 °C), with 2 m cable  
3UT5 = Ex-SPDT, T5 (100 °C), with 2 m cable  
3UT6 = Ex-SPDT, T6 (80 °C), with 2 m cable  
SU20 = analogue transmitter 4...20 mA and 0...10 V

### Options:

0 = without  
1 = please specify in plain text  
HT = high temperature version 160 °C (for liquids only)  
M12 = round plug M12 x 1 acc. to EN 50044 (Tmax. 85 °C)  
Kx = cable version 1 m, 2 m, 5 m, or 10 m



## Dimensions:



**DS04 with flow indicator**

## Dimensions:

Type	Dimensions [mm]							Weight appr. [g]
	SW	D	D1	B.	G	T	L	
01 - 04	27	30	47	71	1/4	14	131	800/900
					3/8	19		
05	27	30	47	71	1/2	19	146	800/850
					3/4	17	174	960/1010
06	34	40	57	76	3/4	18	152	1350/1400
07	40	40	57	76	1	19	156	1050/1100
08	50	40	67	81	1	20	200	2750/2800

## Contacts:

The contact opens/changes, if the flow level has fallen under the adjusted value

Type	Size	Contact function	Switching capacity		
			Angle plug IP65	M12x1 plug IP67	cable connection (1 m) IP67
DS04.1	1/4"	1 = N/O	250 V / 3 A / 100 VA		
DS04.1A	3/8"	2 = SPDT	250 V / 1,5 A / 50 VA, min. load: 3 VA		
DS04.2	1/2"	2X = SPDT for SPS 3ST5 = Ex-N/O, T5* 3ST6 = Ex-N/O, T6* 3UT5 = Ex-SPDT, T5* 3UT6 = Ex-SPDT, T6*	250 V / 1 A / 60 VA	-/-	-/-
DS04.3	3/4"		-/-	-/-	250 V / 2 A / 60 VA (2 m cable)
DS04.4	1"		-/-	-/-	250 V / 1 A / 30 VA, min load: 3 VA (2 m cable)
			-/-	-/-	

\* Exact max. switching capacity: see ATEX documents

## ATEX-designations:

### Contacts 3ST5, 3ST6, 3UT5, 3UT6:

ATEX II 2 G Ex mb IIC T6 Gb, ATEX II 2 D Ex tb IIIC T80 °C Db  
ATEX II 2 G Ex mb IIC T5 Gb, ATEX II 2 D Ex tb IIIC T100 °C Db  
(with cable connection, Standard 2 m only)

## Analogue Transmitter SU20:

The position of a magnetic float / piston is detected by means of Hall sensors and converted into an analogue signal. .

- analogue signal 4...20 mA and 0...10 V
- operating temperature: -20... +70 °C
- accuracy: +/- 10 % of full scale
- Aluminium housing, anodized



### Technical Data:

<b>Accuracy*:</b>	+/- 1 % of full scale
<b>Operating temperature:</b>	-20...+70 °C
<b>Storage temperature:</b>	-20...+80 °C
<b>Repeatability:</b>	tbd.
<b>Housing material:</b>	Aluminium, blue anodized
<b>Protection class:</b>	IP67

\* The actual accuracy depends on the flow sensor used. On request the accuracy of the flow sensor used can be significantly increased by a customized calibration.

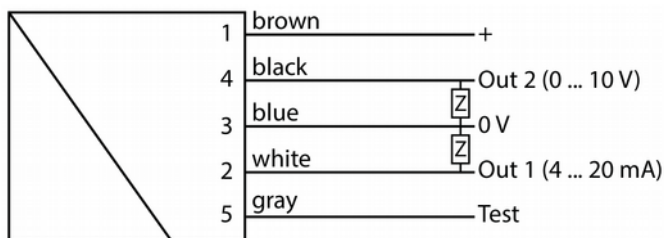
### Electrical Data:

<b>Analogue output:</b>	4...20 mA and 0...10 V
<b>Power supply:</b>	24 V <sub>CD</sub> (19...30 V <sub>DC</sub> )
<b>Power consumption:</b>	< 1 W
<b>Current output:</b>	max. load 600 Ohm
<b>Voltage output</b>	max. current 10 mA
<b>Connection:</b>	round plug M12x1, 5-pole

### Notes:

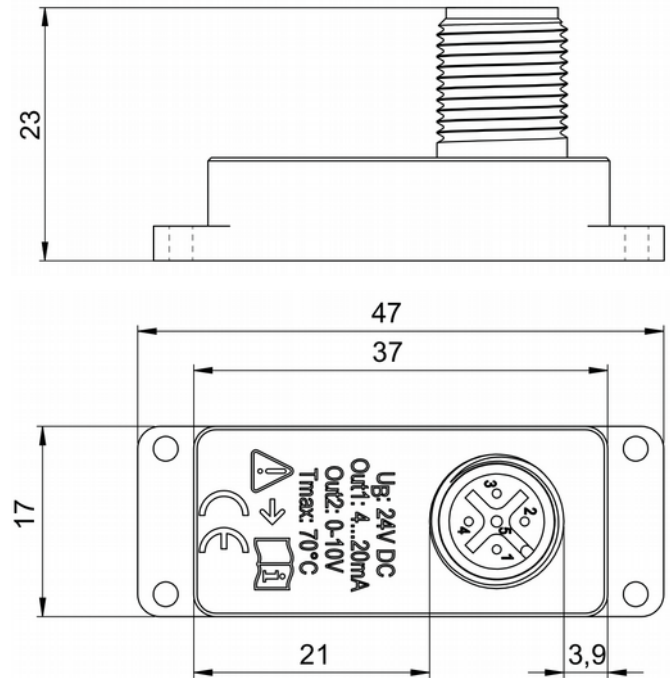
Flowmeter and analogue transmitter SU20 have been optimally adjusted to each other and may not be exchanged.

### Electrical Connection:



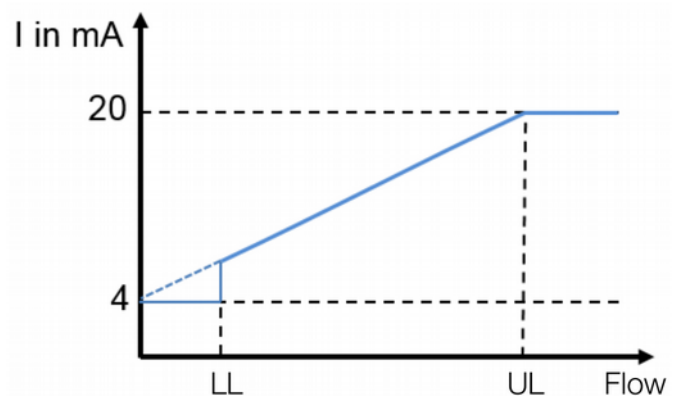
Attention: Pin 5 must not be electrically connected! We strongly recommend use of a four core cable.

### Dimensions:

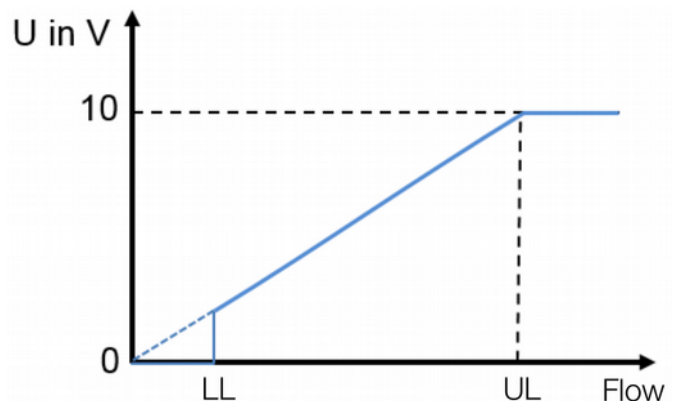


### Characteristics:

#### Current-Flow characteristic:



#### Voltage-Flow characteristic:



LL: lower limit of measuring range  
UL: upper limit of measuring range

## Accessories (see separate data sheets):

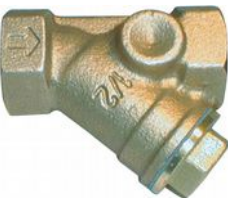
- Needle valves SNV01, SNV02



- Ball valves SKG01, SKG02



- Dirt traps SF00, SF01



- Protection relay MSR01



- M12 Plug connector PVC-cable SM12



## Notes:

The specified measuring/switching ranges apply when the instrument is installed vertically and the flow rate is from bottom to top.

Other installation positions or operating densities deviating from the specified specifications increase the specified measuring error.

Special scales for different media and operating conditions are available on request.

The specified switching points are shut-off points at falling flow rates. Please note that the switch-on points are higher due to the hysteresis.

For applications where pressure surges are to be expected, please contact PKP!