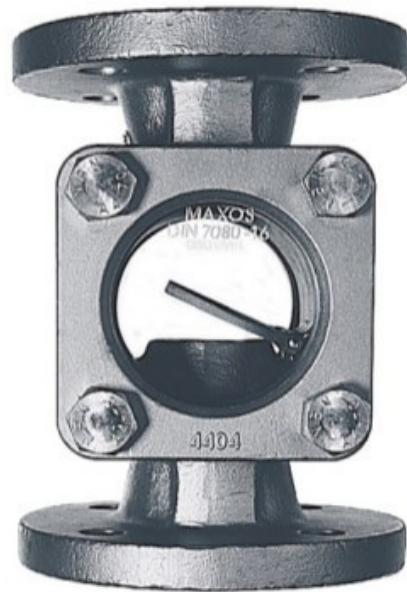


# DG11

## Sight Flow Indicator with Flanged Connection

- applicable for liquids and gases
- available with DIN or ANSI flanges
- standard with drip tube, flap or rotor optionally available
- materials: cast iron, cast steel or stainless steel
- for pipes from 1/2"/ DN 15 up to 8"/ DN 200
- for media-temperatures up to 300 °F/ 150 °C, higher ratings up to 546 °F/ 280 °C optionally available
- pressure rating: 232 psi/ PN 16, 363 psi/ PN 25, 580 psi/ PN 40, higher pressure ranges optionally available



### Description:

DG11 sight glasses are used to visually monitor the flow of liquids in pipe systems.

Depending on the type of liquid and flow volume, these devices are used with a fully clear bore or with a flap or rotor (for transparent liquids).

DG11 sight flow indicator permits reliable monitoring of the function and performance of single devices or entire systems.

### Applications:

Because they are available in a variety of materials and designs, DG11 sight glasses can be used in almost any kind of pipe system.

## Models:

- DG11.S:** standard model with drip tube (can be installed in any position)
- DG11.K:** with flap (can only be installed horizontally or for upward vertical flows)
- DG11.RK:** with rotor made of POM (Tmax. 248 °F / 120 °C, can be installed in any position)
- DG11.RP:** with rotor made of PTFE (Tmax. 500 °F / 260 °C, can be installed in any position)

**Advice: Consider flow-direction**

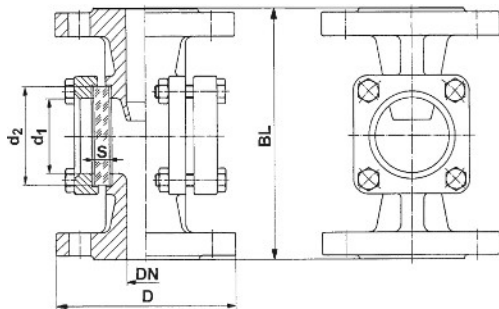
## Housing materials (wetted parts):

- DG11.x.G:** cast iron GG 25 (EN-GJL-250) varnished
- DG11.x.S:** cast steel GS-C 25 (1.0619/GP2406H)
- DG11.x.E:** stainless steel (1.4408)

## Sight Glass Material:

- DG11.x.x.N:** soda-lime glass (Tmax. 300 °F/ 150 °C) DIN8902
- DG11.x.x.B:** borosilicate glass (Tmax. 536 °F/280 °C) DIN7080

## Dimensions:



**Advice:** from DN 65 round glass cover

connection (DIN/ ANSI)	D [mm] PN 16	BL [mm]	d1 [mm]	d2 [mm]	S [mm] PN 16	weight [kg]*	
						G	S+E
15 / 1/2"	95	130	32	45	10	3,4	3,4
20 / 3/4"	105	150	32	45	10	3,9	4,0
25 / 1"	115	160	48	63	10	5,9	6,3
32 / 1 1/4"	140	180	48	63	12	6,9	7,4
40 / 1 1/2"	150	200	65	80	12	10,1	10,6
50 / 2"	165	230	80	100	15	13,2	14,4
65 / 2 1/2"	185	290	80	100	15	22,1	23,0
80 / 3"	200	310	100	125	20	29,8	31,6
100 / 4"	220	350	125	150	25	38,4	41,7
125 / 5"	250	400	150	175	25	46,5	47,0
150 / 6"	285	480	175	200	30	59,0	67,0
200 / 8"	340	600	175	200	30	96,0	118

bigger sizes on request

\*) weight without installation

## Order Code:

**Order number:** DG11. RK. E. B. 25. A. 10. 0

**Sight glass flow indicator with flanged connection**

### Designs:

- S = standard-design with drip tube  
 K = with flap  
 RK= with plastic rotor (POM)  
 (only up to DN 40, 1 1/2")  
 RP= with plastic rotor (PTFE)

### Housing materials:

- G = cast iron (PN 16 only)  
 S = cast steel  
 E = stainless steel

### Sight glass material:

- N = soda lime glass  
 B = borosilicate glass

### Nominal size:

- 15...250 = ANSI 1/2" to ANSI 8"  
 DN 15 to DN 200  
 see table "Dimensions"

### Process connection:

- A = ANSI Flange\*  
 D = DIN Flange

### Pressure rate:

- 10 = PN 10 (standard from DN 150 and above)  
 16 = PN 16 (standard up to DN 125, from DN 150 only with borosilicate glass) \*\*  
 25 = PN 25 (only up to DN 100 with borosilicate glass)  
 40 = PN 40 (only up to DN 80 with borosilicate glass)

### Options:

- 0 = without  
 1 = Please specify in plain text

\*) for 150 lbs only (300 lbs on request), ANSI flange in cast iron not for DN 100  
 \*\*) at sizes DN 15 and DN 20 in combination with cast steel or st. st. PN 40 is standard

## Technical Data:

**Materials:** housing and sight glass: see description:  
 gasket: graphite  
 (other gasket materials on request)

**Max. pressure:** 145 psi/ 232 psi (10 / 16 bar)  
 (higher pressure ratings optionally available)

**Max. media-temperature:**  
**DG11.S/K...:** 300 °F/ 150 °C (536 °F/ 280 °C with borosilicate glass)  
**DG11.RK...:** 248 °F/ 120 °C  
**DG11.RP...:** 300 °F/ 150 °C (260 °C with borosilicate glass)

## Special versions on request:

- sight glass plates sealed acc. to DIN 28121
- sight glass made of META glass (metall-merged sight glass plates acc. to DIN 7079) for particularly dangerous media
- welded version
- no dead space version
- angle- or 3-way version