



PKP Process Instruments Inc.

10 Brent Drive

Hudson, MA 01749

Tel: +1-978-212-0006

Fax: +1-978-568-0060

PKP Prozessmesstechnik GmbH

Borsigstrasse 24

D-65205 Wiesbaden-Nordenstadt

Tel: 06122 / 7055 - 0

Fax: 06122 / 7055 - 50

Operating Instructions

DG08

Flow Indicator

Contents

1 Introduction	2
2 Safety Information	2
3 Functional Description	3
4 Maintenance	3
5 Specification	see data sheet in the appendix

1 Introduction

Series DG08 flow indicators are noted for their reliable function and easy operation. To obtain the greatest benefit from this device, please observe the following cautionary statement:

Persons who are responsible for setting up or operating this device must be sure to read the and understand the operating instructions and the safety information pertaining to it.

2 Safety Information

2.1 General Instructions

To ensure safe operation, the device must only be operated according to the information in the operating instructions. When the device is in use, the regulations and safety standards applicable to the specific application must also be observed. This statement also applies to the use of accessories.

2.2 Proper Usage

Series DG08 flow indicators are designed for optical checking of gaseous media.

Any application extending beyond this specific intended use does not constitute proper usage. Series DG08 must not be employed as the sole means of avoiding hazardous conditions in machinery and installations.

The machinery and installations must be designed in such a manner that faulty conditions and malfunctions will not present hazardous situations for operating personnel.

2.3 Qualified Personnel

Series DG08 must only be used by qualified, knowledgeable personnel trained in correct use of these devices. Qualified personnel are those persons familiar with setting up and assembling these devices, placing them in service and operating them. In addition, such personnel must also be qualified to perform the work associated with the application for which the device is being used.

3 Functional Description

The corresponding measured media lifts a Teflon ball resting on the housing valve seat. The ball becomes visible in the dome made of borosilicate glass as the throughflow quantity increases. Its position gives an indication of the current throughflow. The device is suitable for horizontal use with the dome facing upwards.

4 Maintenance

The device needs only a small number of regular maintenance. How often you carry out this maintenance will depend on how often the device is used and the conditions of use. The number of the maintenance is depending of the soiling of the media.

DG08

Ball-Type Flow Indicator

- Sturdy, robust design
- Available in red bronze or stainless steel
- Resistant to high heat
- Domed sight glass for easy view of ball



Description:

The DG08 mechanical flow indicator is used for visual verification of the flow of liquids or gases. The liquid or gas being monitored lifts the PTFE ball from its valve seat. As the flow increases, the ball in the domed sight glass becomes increasingly visible. These devices are made of high-quality materials, allowing them to be used with a great variety of liquids or gases.

Typical Applications:

DG08 mechanical flow indicators are used to monitor the flow of liquid or gaseous media. These devices are especially suited for use in industrial systems and for process monitoring as well as for basic monitoring of compressors, ventilators, fans and many other types of similar equipment.

Models:

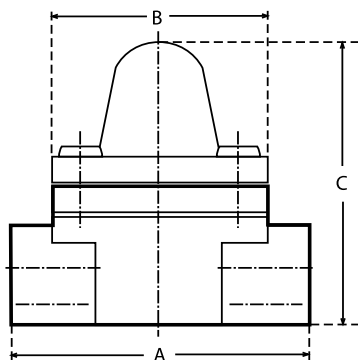
Materials: Red bronze or stainless steel

Flow Rates:

NPT / G	Water GPM / l/min	
	Ball/ initial movement	Ball/ fully visible
1/4"	0.03 / 0.1	0.26 / 1.0
3/8"	0.03 / 0.1	0.26 / 1.0
1/2"	0.03 / 0.1	0.26 / 1.0
3/4"	0.63 / 2.4	1.37 / 5.2
1"	0.71 / 2.7	1.45 / 5.5
1 1/4"	2.90 / 11	4.23 / 16
1 1/2"	4.23 / 16	5.55 / 21

Dimensions:

NPT / G	A in inch / mm	B in inch / mm	C in inch / mm	Weight in lbs. / kg
1/4"	3.00 / 76	2.48 / 63	3.10 / 79	1.60 / 0.72
3/8"	3.00 / 76	2.48 / 63	3.10 / 79	1.50 / 0.69
1/2"	3.00 / 76	2.48 / 63	3.10 / 79	1.43 / 0,65
3/4"	3.50 / 89	2.48 / 63	3.75 / 95	2.86 / 1.30
1"	3.50 / 89	2.48 / 63	3.75 / 95	2.75 / 1.25
1 1/4"	4.60 / 117	2.95 / 75	4.90 / 125	5.50 / 2.50
1 1/2"	4.60 / 117	2.95 / 75	4.90 / 125	5.18 / 2.35



Model Key:

Order Number: DG08. E. 10. 0

Ball-Type Flow Indicator

Materials:

R = Red bronze
E = Stainless steel

Connections:

08N = 1/4" NPT	08 = G 1/4
10N = 3/8" NPT	10 = G 3/8
15N = 1/2" NPT	15 = G 1/2
20N = 3/4" NPT	20 = G 3/4
25N = 1" NPT	25 = G 1
32N = 1 1/4" NPT	32 = G 1 1/4
40N = 1 1/2" NPT	40 = G 1 1/2

Special Features:

0 = None
1 = Please specify in writing.

Technical Specifications:

Max. pressure: 232 psi / 16 bar

Max. temperature: 392 °F / 200 °C

Materials:

DG08.R:

Housing: Red bronze
Sight glass: Borosilicate glass
Pins: Stainless steel
Indicator ball: PTFE
Gasket: Klingersil C-4400

DG08.E:

Housing: Stainless steel
Sight glass: Borosilicate glass
Pins: Stainless steel
Indicator ball: PTFE
Gasket: Klingersil C-4400

PKP Prozessmesstechnik GmbH

Borsigstraße 24 · D-65205 Wiesbaden

+49 (0) 6122-7055-0 · +49 (0) 6122-7055-50

Email: info@pkp.de · Internet: www.pkp.de

PKP Process Instruments Inc.

10 Brent Drive · Hudson, MA 01749

+1-978-212-0006 · +1-978-568-0060

Email: info@pkp.eu · Internet: www.pkp.eu

